

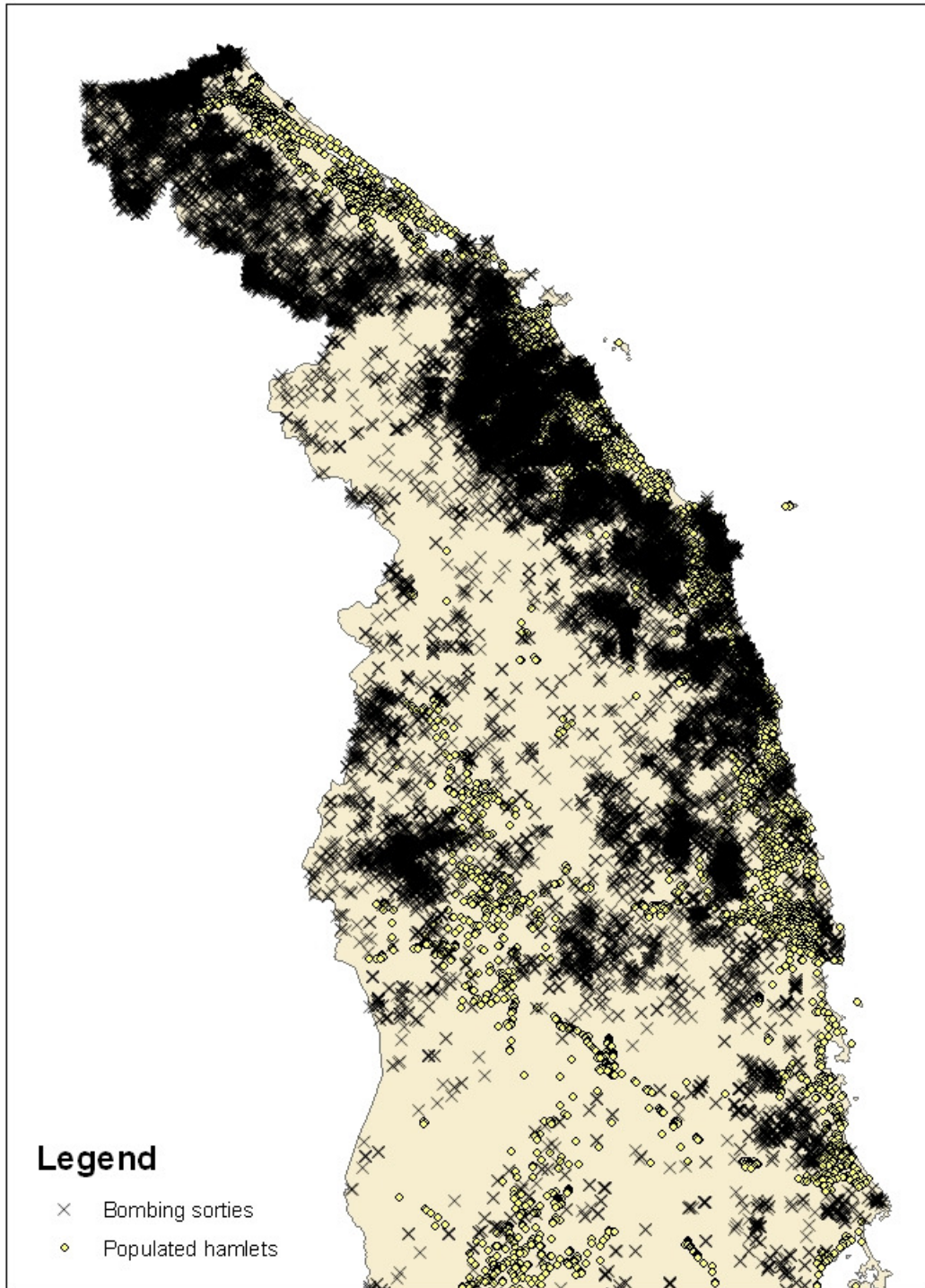
Into the Arms of the Rebels? Aerial Bombardment, Indiscriminate Violence,  
and Territorial Control in the Vietnam War

**Maps**

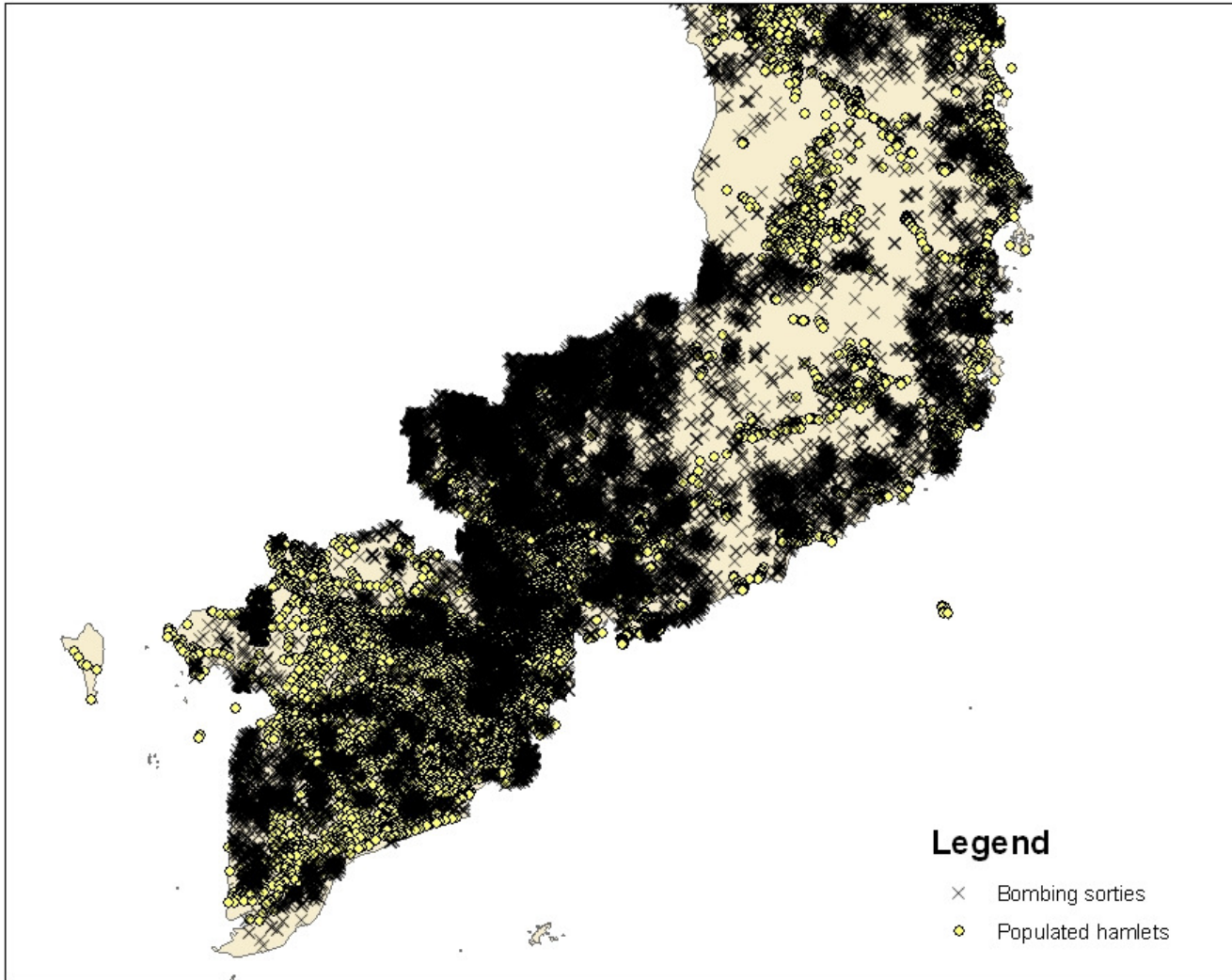
Matthew Adam Kocher  
Yale University and CIDE  
matthew.kocher@yale.edu

Thomas B. Pepinsky  
University of Colorado  
pepinsky@colorado.edu

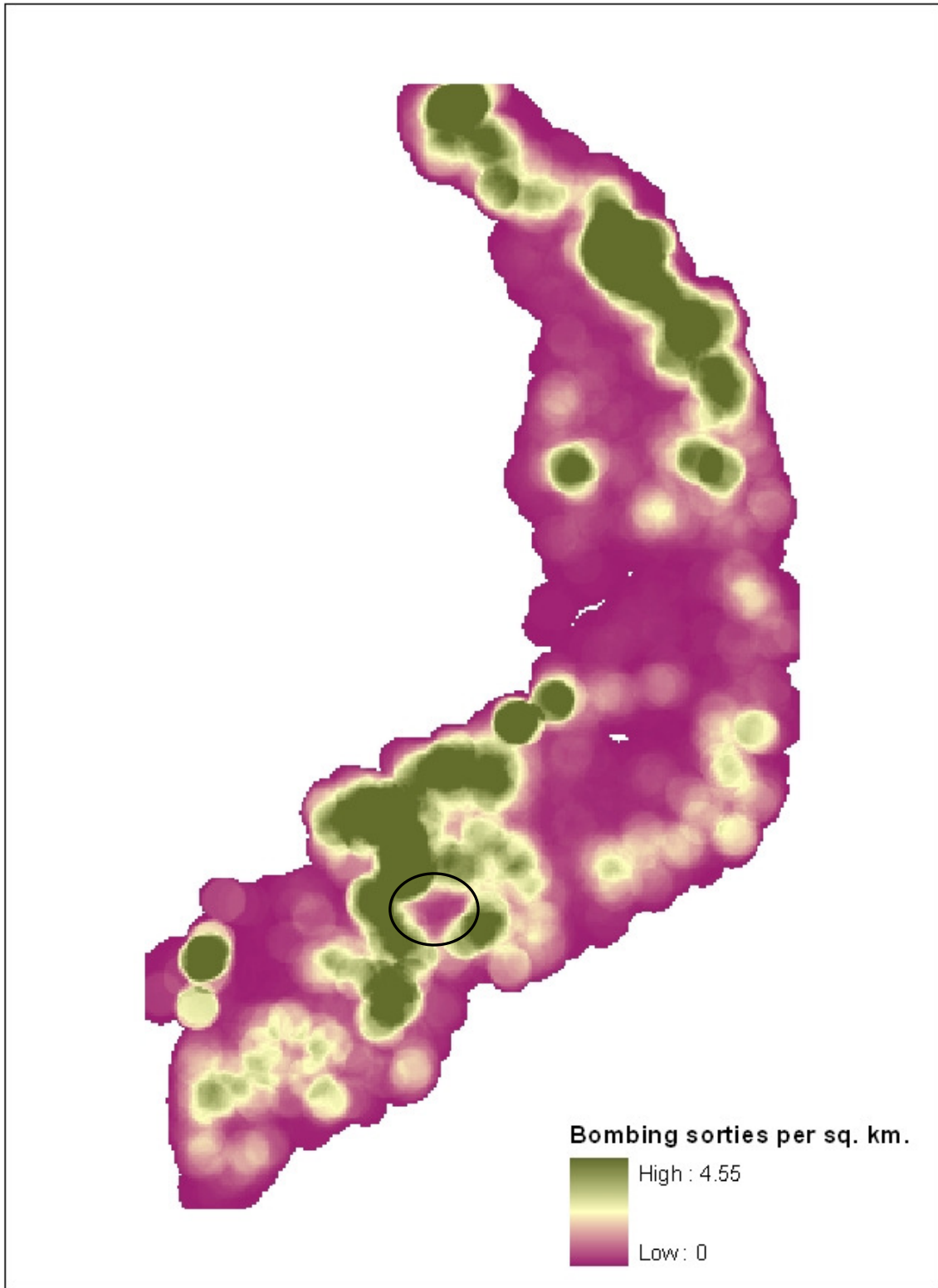
Stathis N. Kalyvas  
Yale University  
stathis.kalyvas@yale.edu



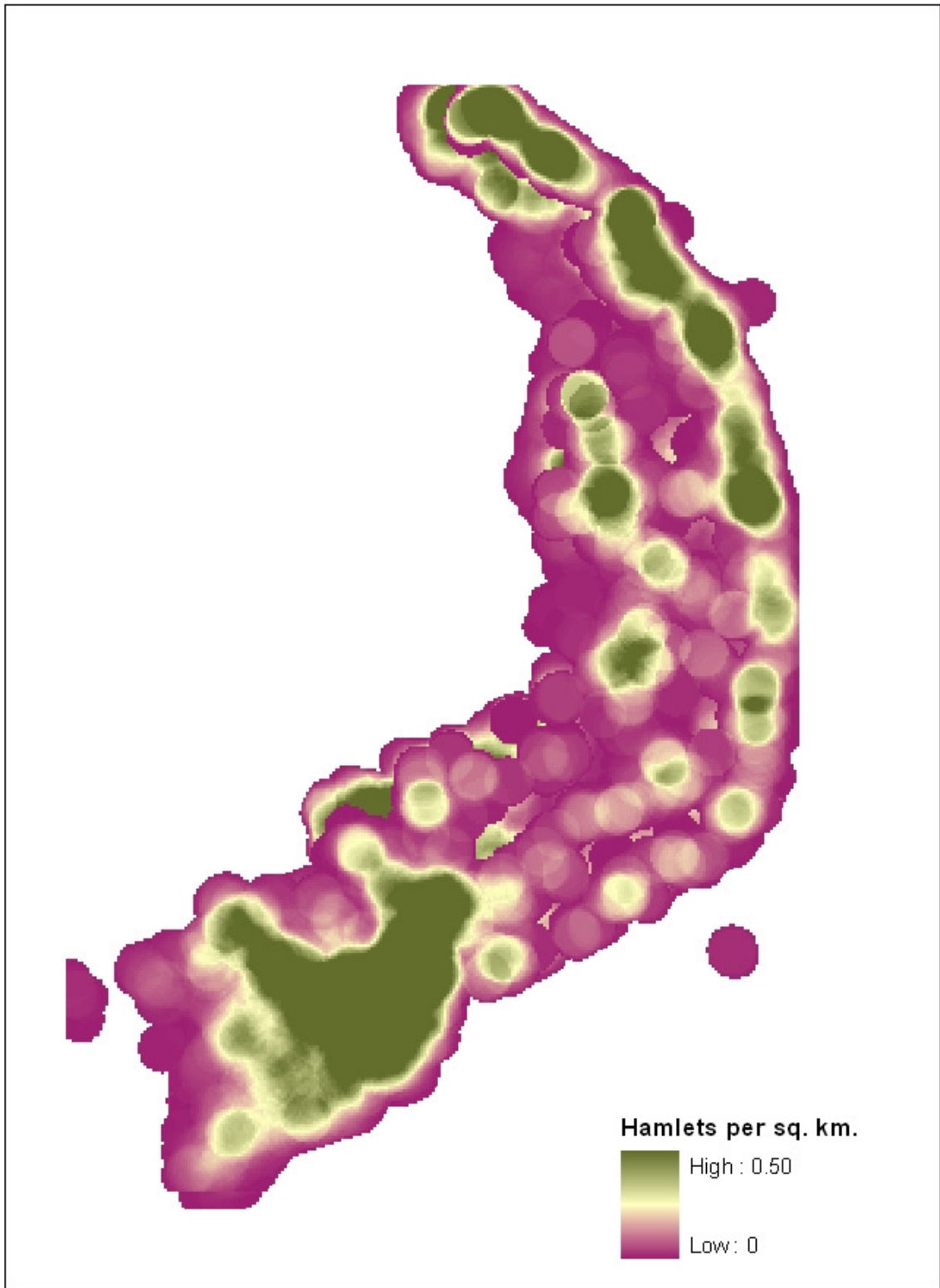
**Map #1:** Bombing sorties and populated hamlets,  
northern half of South Vietnam, July – December, 1969  
Scale approximately 1:3000000



**Map#2:** Bombing sorties and populated hamlets,  
southern half of South Vietnam, July – December 1969  
Scale approximately 1:3000000

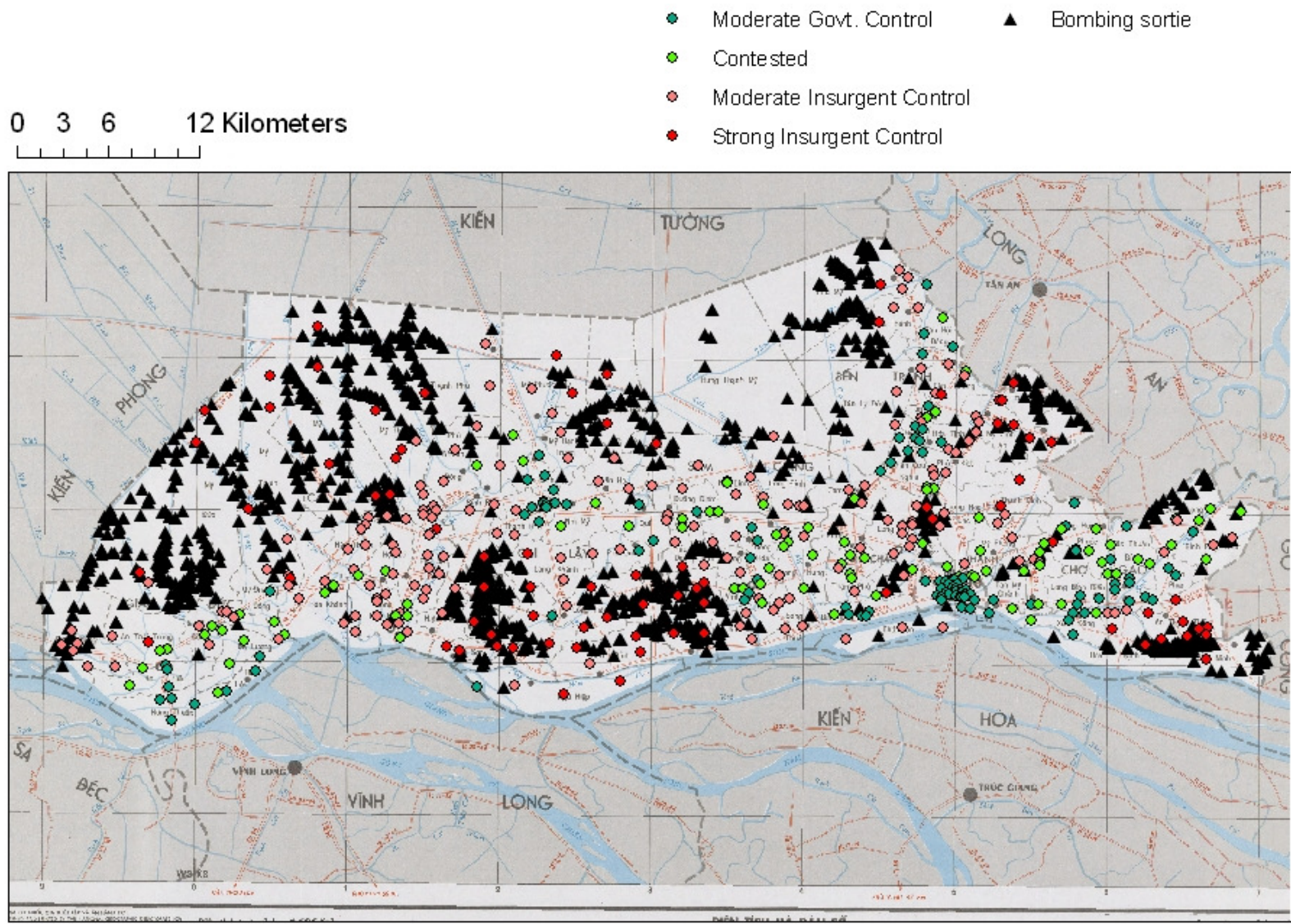


Map #3: Bombing density, South Vietnam, July – December 1969  
Scale approximately 1:4500000



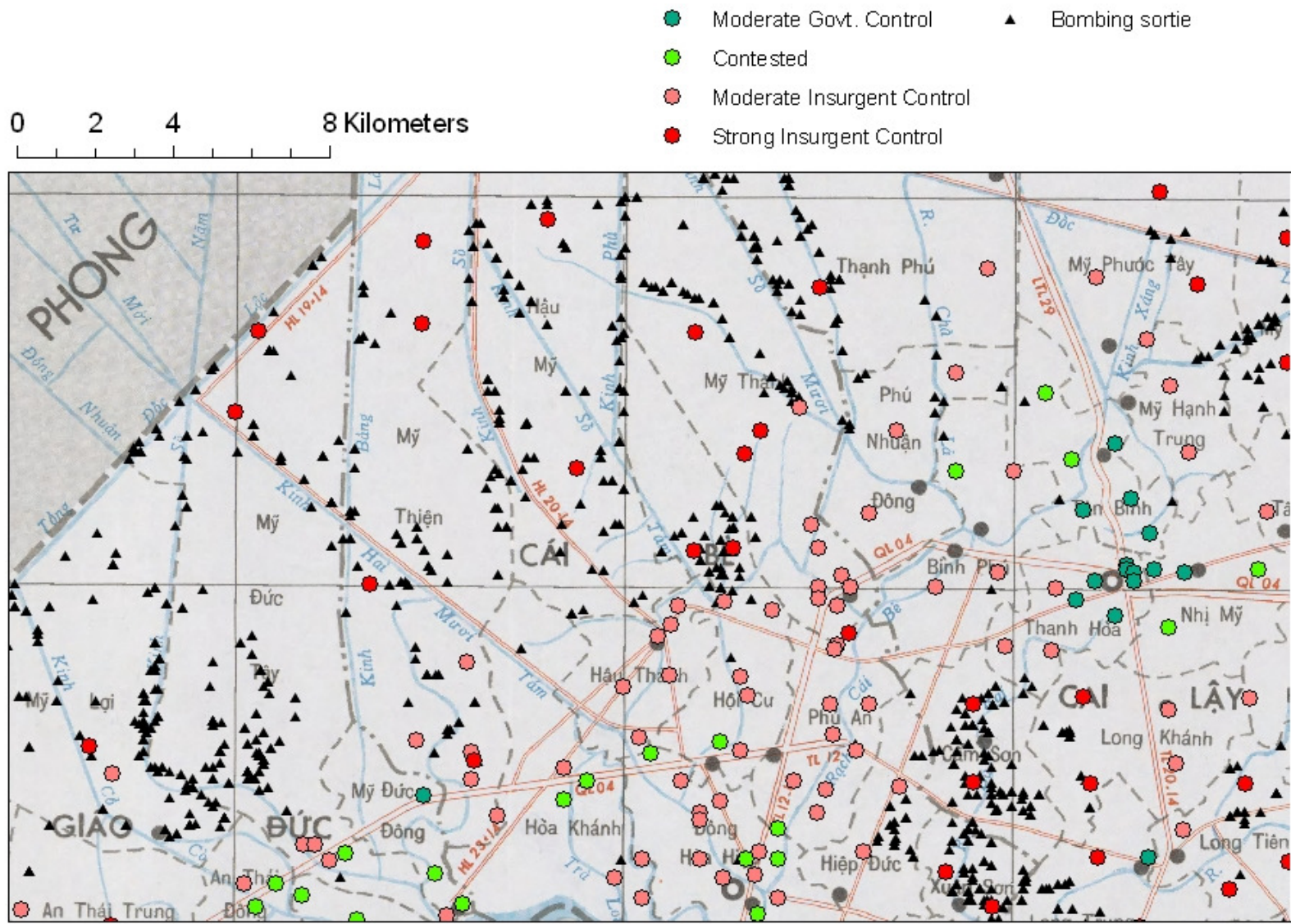
Map #4: Hamlet density, South Vietnam, July – December 1969  
Scale approximately 1:4500000



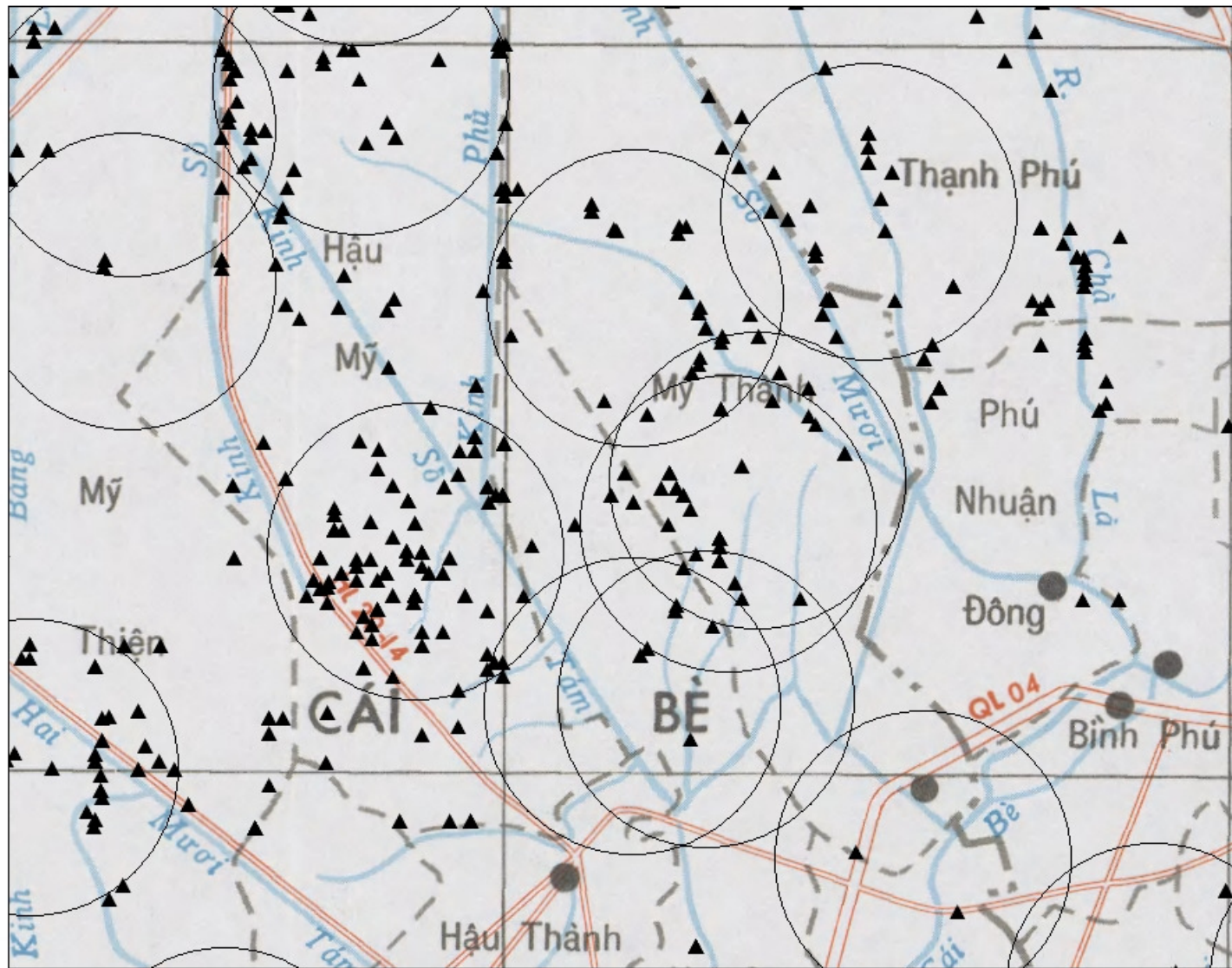


**Map #5:** Bombing and control, Dinh Tuong Province, South Vietnam, July 1969  
 Scale approximately 1: 350000





**Map #6:** Bombing and control, Dinh Tuong Province, South Vietnam, July 1969  
 Scale Approximately 1:140000



**Map 7:** Illustration of the procedure for mapping bombing sorties to hamlets. Cai Be District, Dinh Tuong Province, Republic of South Vietnam, July 1969. Scale approximately 1: 50000